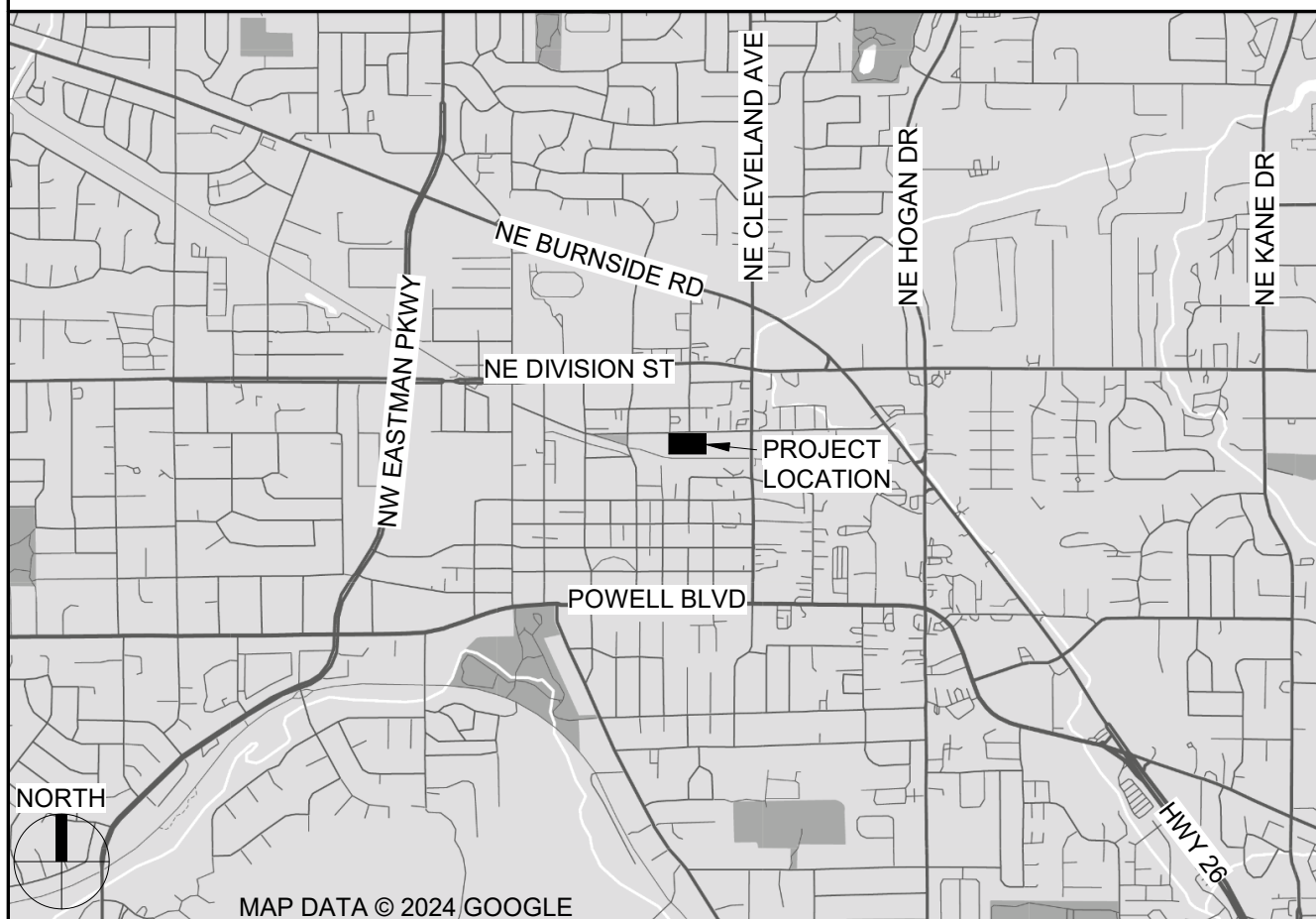
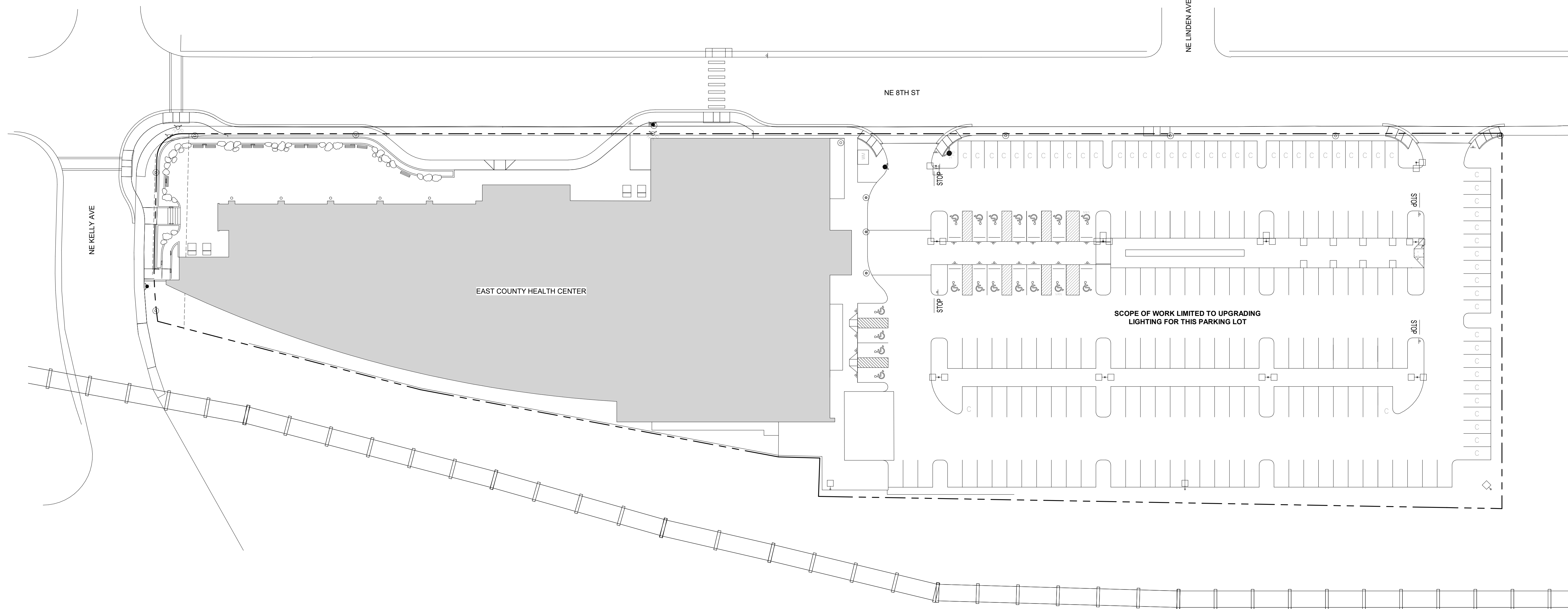


GENERAL PROJECT NOTES	PROJECT TEAM	PROJECT SUMMARY	SHEET INDEX						
<p>REFER TO OWNER-CONTRACTOR AGREEMENT FOR GENERAL CONDITIONS. WHERE THERE IS A CONFLICT BETWEEN THE CONTRACT AND NOTES HEREIN, THE CONTRACT TAKES PRECEDENCE.</p> <p>1. GENERAL CONTRACTOR IS RESPONSIBLE FOR THE FULL SET OF CONSTRUCTION DOCUMENTS, INCLUDING BUT NOT LIMITED TO DRAWINGS, AND ADDENDA.</p> <p>2. THE CONTRACTOR SHALL FIELD VERIFY ALL CONDITIONS AND DIMENSIONS PRIOR TO ANY WORK AND SHALL BE RESPONSIBLE FOR ALL WORK AND MATERIALS INCLUDING THOSE FURNISHED BY SUBCONTRACTORS</p> <p>3. DIMENSIONS TAKE PRECEDENCE OVER DRAWINGS; DO NOT SCALE DRAWINGS TO DETERMINE ANY LOCATIONS. THE ARCHITECT SHALL BE NOTIFIED OF ANY DISCREPANCY PRIOR TO CONTINUING WITH WORK.</p> <p>4. GENERAL CONTRACTOR SHALL KEEP THE CONSTRUCTION SITE IN A BROOM CLEAN CONDITION AT ALL TIMES DURING THE PROJECT.</p> <p>5. THE CONTRACTOR SHALL REPORT TO THE ARCHITECT ANY ERRORS, INCONSISTENCIES OR OMISSIONS HE OR SHE MAY DISCOVER. BRING UNFORSEEN CONDITIONS TO ATTENTION OF ARCHITECT UPON DISCOVERY AT ANY POINT. THE MEANS OF CORRECTING ANY ERROR OR UNFORSEEN CONDITION SHALL FIRST BE APPROVED BY THE ARCHITECT.</p> <p>6. ALL REQUIRED CITY AND/OR COUNTY LICENSE SHALL BE ACQUIRED AND PAID FOR BY THE INDIVIDUAL TRADE.</p> <p>7. THE ARCHITECT WILL REVIEW SHOP DRAWINGS AND SAMPLES FOR CONFORMANCE WITH THE DESIGN CONCEPT OF THE PROJECT. THE ARCHITECT'S REVIEW OF A SEPARATE ITEM SHALL NOT INDICATE APPROVAL OF AN ASSEMBLY IN WHICH THE ITEM FUNCTIONS.</p> <p>8. IT SHALL BE THE RESPONSIBILITY OF THE CONTRACTOR TO VERIFY LOCATION OF ALL EXISTING UTILITIES WHETHER SHOWN HEREIN OR NOT AND TO PROTECT THEM FROM DAMAGE. THE CONTRACTOR SHALL BEAR ALL EXPENSES OF REPAIR OR REPLACEMENT OF UTILITIES OR OTHER PROPERTY DAMAGED BY OPERATIONS IN CONJUNCTION WITH THE EXECUTION OF THE WORK.</p> <p>9. CITY APPROVED PLANS SHALL BE KEPT IN A SECURE PLACE AND SHALL NOT BE USED BY WORKERS. THE CONTRACTOR SHALL BE RESPONSIBLE THAT ALL SUBCONTRACTORS' CONSTRUCTION SETS REFLECT THE SAME INFORMATION. THE CONTRACTOR SHALL ALSO MAINTAIN, IN GOOD CONDITION, ONE COMPLETE SET OF STAMPED CITY APPROVED PLANS WITH ALL REVISIONS, ADDENDUMS, AND CHANGE ORDERS ON THE PREMISES AT ALL TIMES. THESE ARE TO BE UNDER THE CARE OF THE JOB SUPERINTENDENT AND MUST BE MADE AVAILABLE TO BUILDING AND FIRE INSPECTIONS FOR REFERENCE DURING CONSTRUCTION.</p> <p>10. THE CONTRACTOR SHALL BE RESPONSIBLE FOR THE COMPLETE SECURITY OF THE SITE WHILE THE JOB IS IN PROGRESS AND UNTIL JOB COMPLETION.</p> <p>11. THE CONTRACTOR SHALL TAKE ALL NECESSARY PRECAUTIONS TO ENSURE THE SAFETY OF THE OCCUPANTS AND WORKERS AT ALL TIMES.</p> <p>12. THE CONTRACTOR IS SOLELY RESPONSIBLE FOR ALL CONSTRUCTION MEANS AND METHODS AND SHALL MAINTAIN THE STRUCTURAL INTEGRITY OF ANY CONSTRUCTION.</p> <p>13. THE CONTRACTOR SHALL BE RESPONSIBLE FOR AND SHALL REPLACE OR REMEDY ANY FAULTY, IMPROPER, OR INFERIOR MATERIALS OR WORKMANSHIP WHICH SHALL APPEAR WITHIN ONE (1) YEAR AFTER THE COMPLETION AND ACCEPTANCE OF THE WORK UNDER THIS CONTRACT.</p> <p>14. CONTRACTOR TO PROVIDE BACKING OR BLOCKING AS REQUIRED FOR MOUNTING ALL WALL MOUNTED SHELVES, EQUIPMENT, ACCESSORIES, CABINETS, ETC.</p> <p>15. GENERAL CONTRACTOR RESPONSIBLE FOR MAINTENANCE OF STAGING AREA AND TO ENSURE THAT MATERIALS DELIVERY AND STORAGE DOES NOT INTERFERE WITH DAILY OPERATION OF ADJACENT PROPERTIES OR PUBLIC RIGHT OF WAY.</p> <p>16. GENERAL CONTRACTOR RESPONSIBLE FOR CONSTRUCTION STAKING.</p>	<p>OWNER</p> <p>MULTNOMAH COUNTY 402 DIXON ST PORTLAND, OR 97227 TEL: 503-349-5897 CONTACT: ELAINE PARKER EMAIL: elaine.parker@multco.us</p> <p>CONTRACTOR</p> <p>TBD</p> <p>ARCHITECT</p> <p>SCOTT EDWARDS ARCHITECTURE, LLP 2525 E. BURNSIDE STREET PORTLAND, OREGON 97214 TEL: 503.226.3617 FAX: 503.226.3715 CONTACT: MARK STEINHARDT EMAIL: msteinhardt@seallp.com CONTACT: MARGARET WILSON EMAIL: mwilson@seallp.com</p> <p>ELECTRICAL ENGINEER</p> <p>REYES ENGINEERING 329 NE COUCH ST. PORTLAND, OR 97232 TEL: 503.673.1061 CONTACT: BRUCE DAVIS EMAIL: wbdavis@reyeseng.com</p>	<p>PROJECT DESCRIPTION:</p> <p>UPGRADING PARKING LOT LIGHTING WITH REPLACEMENT AND ADDITION OF SINGLE HEAD LED FIXTURES TO SELECTED EXISTING POLES AND ADDITION OF THREE NEW POLES WITH SINGLE HEAD LED FIXTURES. ADDITION OF FLIGHT CONTROLLER.</p> <p>PROJECT ADDRESS:</p> <p>600 NE 8TH ST GRESHAM , OR 97030</p> <p>PROPERTY ID:</p> <p>R240117</p> <p>STATE ID:</p> <p>1S3E10AB -06003</p> <p>LEGAL DESCRIPTION:</p> <p>PARTITION PLAT 1998-72, LOT 3</p> <p>ZONING:</p> <p>DTM - (DOWNTOWN TRANSIT MID-RISE)</p>	<p>KEY: ○ DRAWING ISSUED FOR REFERENCE ONLY</p> <p>● DRAWING ISSUED FOR CONSTRUCTION / PERMIT</p> <p>ΔX DRAWING REVISION & REVISION NUMBER</p>						
							PERMIT SET - 02/26/25	SHEET #	SHEET NAME
			VICINITY MAP					GENERAL	
								● G101 GENERAL PROJECT INFORMATION & SITE PLAN	
				ELECTRICAL					
				● EL-100-1 ABBREVIATIONS, SYMBOLS, LEGEND					
				● EL-101-1 SITE LIGHTING PLAN					
				● EL-102-1 LIGHTING FLOOR PLAN					
			● EL-102-3 LIGHTING FLOOR PLAN						
			● EL-400-1 LIGHTING DETAILS						
			● EL-600-1 ONE-LINE DIAGRAM						



①

SITE PLAN

$$1/32'' = 1'-0''$$


Mark	Date	Description of Revision

Drawn By: MS	Checked By: Checker
Building Number: B437 - MCE	Approved By: Approver
Multico Project Number: P78 CP09 2024 27	

Sheet Title
GENERAL PROJECT
INFORMATION &
SITE PLAN

Date 02/26/25

G101

Sheet Of

EAST PARKING LIGHTING
EAST COUNTY HEALTH CENTER
600 NE 8TH, GRESHAM, OR 97030

Mark	Date	Description of Revision	By

Drawn By: WSD
Building Number:
Mulico Project Number:

Checked By: HG
Approved By: FVR

Sheet Title
ABBREVIATIONS,
SYMBOLS, LEGEND

Date
02/26/2025
EL-100-1
Sheet Of

ABBREVIATIONS

A	AMPERE (AMP)	JB	JUNCTION BOX
AAF	ABOVE ACCESS FLOOR	KV	KILOVOLT
ABF	AIRBLOWN FIBER	KVA	KILOVOLT AMP
AC	ABOVE COUNTER	KVAR	KILOVOLT AMPS REACTIVE
AFF	ABOVE FINISHED FLOOR	KW	KILOWATT
AHJ	AUTHORITY HAVING JURISDICTION	KWH	KILOWATT HOUR
AIC	AMPS INTERRUPTING CURRENT	LEC	LOCAL EXCHANGE CARRIER
ALT	ALTERNATE	LED	LIGHT EMITTING DIODE
AN	ANALOG	LV	LOW VOLTAGE
ARCH	ARCHITECT / ARCHITECTURAL	MCA	MINIMUM CIRCUIT AMPS
ARM	ARMORED	MCB	MAIN CIRCUIT BREAKER
ATS	AUTOMATIC TRANSFER SWITCH	MCC	MOTOR CONTROL CENTER
AV	AUDIO VISUAL	MDF	MAIN DISTRIBUTION FRAME
AVC	AUDIO VISUAL CONTRACTOR	MDP	MAIN DISTRIBUTION PANEL
BC	BONDING CONDUCTOR	MECH	MECHANICAL
BDF	BUILDING DISTRIBUTION FRAME	MH	MAINTENANCE HOLE
BMS	BUILDING MANAGEMENT SYSTEM	MHz	MEGAHERTZ
BOC	BOTTOM OF CONDUIT	MLO	MAIN LUGS ONLY
BOCT	BOTTOM OF CABLE TRAY	MTS	MANUAL TRANSFER SWITCH
C.	CONDUIT	NAC	NOTIFICATION APPLIANCE CIRCUIT (FA)
CATV	(CABLE TV) COMMUNITY ACCESS TELEVISION	NIC	NOT IN CONTRACT
CB	CIRCUIT BREAKER	OFCI	OWNER FURNISHED, CONTRACTOR INSTALLED
CCTV	CLOSED CIRCUIT TELEVISION	OFE	OWNER FURNISHED EQUIPMENT
CF	CELLULAR FLOOR	OFOI	OWNER FURNISHED, OWNER INSTALLED
CKT	CIRCUIT	OSP	OUTSIDE PLANT
CLG	CEILING	PA	PUBLIC ADDRESS
CO	CENTRAL OFFICE	PB	PULL BOX
CPE	CUSTOMER UNIVERSAL ENCLOSURE	PE	PHOTOELECTRIC
CT	CURRENT TRANSFORMER	PF	POWER FACTOR
CU	COPPER	PMV	PROJECT MANAGER VERIFICATION
CUE	CONCRETE UNIVERSAL ENCLOSURE	PNL	PANELBOARD
DAS	DISTRIBUTED ANTENNA SYSTEM	PON	PASSIVE OPTICAL NETWORK
dB	DECIBEL	PVC	POLYVINYL CHLORIDE CONDUIT
DB	DUCT BANK	PWR	POWER
DML	DOUBLE MAIN LUGS	RW	RIGHT OF WAY
DN	DOWN	RAD	RADIUS
EQ	EQUAL DISTANT	RG	RADIO GRADE
EC	ELECTRICAL CONTRACTOR	SAA	SECURITY ALARM ANNUNCIATOR
EF	ENTRANCE FACILITY	SACP	SECURITY ACCESS CONTROL PANEL
EM	EMERGENCY	SDP	SUBDISTRIBUTION PANEL
EMC	ELECTROMAGNETIC COMPATIBILITY	SPD	SURGE PROTECTION DEVICE
EMI	ELECTROMAGNETIC INTERFERER	ST	SHUNT TRIP
EMT	ELECTRIC METALLIC TUBING	STS	STATIC TRANSFER SWITCH
EPO	EMERGENCY POWER OFF	SW	SWITCH
EP	ENTRANCE POINT	TBB	TELECOM BONDING BACKBONE
EP	EXPLOSION PROOF	TBC	TELECOM BONDING CONDUCTOR
ER	EMERGENCY RELEASE	TBD	TO BE DETERMINED
ERRCS	EMERGENCY RESPONDER RADIO COMMUNICATION SYSTEM	TE	TELECOM ENCLOSURE
FA	FIRE ALARM	TGB	TELECOM GROUNDING BUSBAR
FAA	FIRE ALARM ANNUNCIATOR	TL	THRU LUGS
FACP	FIRE ALARM CONTROL PANEL	TMGB	TELECOM MAIN GROUNDING BUSBAR
FLA	FULL LOAD AMPS	TO	TELECOM OUTLET
FO	FIBER OPTIC	TP	TAMPERPROOF
FSD	FIRE SMOKE DAMPER	TR	TELECOM ROOM
GC	GENERAL CONTRACTOR	TB	TELEPHONE TERMINAL BOARD
GFI	GROUND FAULT INTERRUPTER	TTC	TELEPHONE TERMINAL CABINET
GFOI	GROUND FAULT CIRCUIT INTERRUPTER	TV	TELEVISION / DIGITAL DISPLAY
GHz	GIGAHERTZ	TVSS	TRANSIENT VOLTAGE SURGE SUPPRESSOR
GND	GROUND	TYP	TYPICAL
GRC	GALVANIZED RIGID CONDUIT	UC	UNDER COUNTER
GRD	GROUND	UG	UNDERGROUND
GRS	GALVANIZED RIGID STEEL CONDUIT	UON	UNLESS OTHERWISE NOTED
HH	HANDHOLE	UPS	UNINTERRUPTIBLE POWER SUPPLY
HP	HORSEPOWER	V	VOLTAGE
HPS	HIGH PRESSURE SODIUM	VA	VOLT AMPERES
HV	HIGH VOLTAGE	VP	VAPORPROOF
HZ	HERTZ	W	WATTS
IBC	INTERNATIONAL BUILDING CODE	WAO	WORK AREA OUTLET
IDF	INTERMEDIATE DISTRIBUTION FRAME	WAP	WIRELESS ACCESS POINT
IG	ISOLATE GROUND	WP	WEATHERPROOF
IR	INTERRUPTING RATING	XFMR	TRANSFORMER
		XFSW	TRANSFORMER SWITCH

NOTE

THIS IS A STANDARD LEGEND SHEET, THEREFORE, SOME SYMBOLS MAY
APPEAR ON THIS SHEET THAT DO NOT APPEAR ON THE DRAWINGS.

WORK RESPONSIBILITY

ALL WORK SHALL BE COORDINATED WITH ALL TRADES INVOLVED. OFFSETS IN CONDUIT,
DEVICES, BOXES, CONDUCTORS, AND TRANSITIONS AROUND OBSTRUCTIONS WHETHER
SHOWN ON DRAWINGS OR NOT SHALL BE PROVIDED AT NO ADDITIONAL COST TO THE OWNER.

GENERAL SYMBOLS

XXXX	123	EQUIPMENT DESIGNATOR SEE SCHEDULE.
E		EXISTING TO REMAIN
X		EXISTING TO BE REMOVED
R		EXISTING TO BE RELOCATED
N		NEW
#		KEYNOTE

SYMBOLS

POWER

	WALL RECEPTACLE: DUPLEX, QUAD
	SWITCHED WALL RECEPTACLE: DUPLEX, QUAD
	FLOOR RECEPTACLE: DUPLEX, QUAD
	CEILING RECEPTACLE: DUPLEX, QUAD
	WALL RECEPTACLE: MOUNTING HEIGHT
	SPECIAL RECEPTACLE: WALL
	JUNCTION BOX: WALL, FLOOR, CEILING
	FLUSH IN-FLOOR POKE THROUGH DEVICE: POWER, DATA OR AV, OR COMBO N# OF DATA PORTS, TYP 2
	SURFACE OUTLET STRIP: DIMENSIONS AS SHOWN
	DISCONNECT SWITCH: FUSED, CIRCUIT BREAKER
	MOTOR STARTER: MAGNETIC, COMBINATION
	MOTOR CONNECTION
	PANEL & CIRCUIT NUMBER
	RECEPTACLE ON DROP CORD
	PUSHBUTTON: WALL
	ADA DOOR ASSIST BUTTON: WALL
	WIRE CONCEALED IN FLOOR OR UNDERGROUND
	RACEWAY AND CONDUCTORS REMOVED AS PART OF DEMOLITION
	CONDUIT ELL: UP, DN
	ELECTRICAL DUCT BANK GROUND ROD, 10' LONG, 5/8" DIAMETER, COPPER BOND TO LOCAL CIRCUIT GROUND CONDUCTOR
	MOTOR OVERLOAD SWITCH
	ELECTRICAL DISTRIBUTION CABINET
	ELECTRICAL DISTRIBUTION PANEL: SURFACE, RECESSED
	ELECTRICAL TRANSFORMER

LIGHTING

	PHOTOCELL: CEILING, WALL MOUNTED
	DUAL TECHNOLOGY, OCCUPANCY SENSOR: CEILING MOUNTED, ULTRASONIC
	DUAL TECHNOLOGY, VACANCY SENSOR: CEILING MOUNTED
	HA = LUMINAIRE TYPE DESIGNATION. 1 = CIRCUIT NUMBER SINGLE GANG, STRAP MOUNTED CONTROL STATION. LIGHT SWITCH: OS = OCCUPANCY SENSOR, K = KEYED, 3 = 3- WAY. LOW VOLTAGE DIMMER / PRESET CONTROL: D TIMER SWITCH: T

SECURITY

	CARD KEY READER STATION (4" SQ. BOX W/SINGLE-GANG RING MOUNT TOP OF READER AT 48" AFF/AFG (BY SECURITY CONTRACTOR)
	EMERGENCY RELEASE STATION
	VIDEO INTERCOM (AIPHONE): STATION, MASTER
	MOTION DETECTOR: WALL, CEILING
	DOOR CONTACT (POSITION) SWITCH (BY SECURITY CONTRACTOR)
	DOOR OPERATOR/ADA RELEASE BUTTON
	PUSH BUTTON: P= PANIC
	ELECTRIC LOCK CONNECTION
	REQUEST TO EXIT SENSOR (BY SECURITY CONTRACTOR)
	ELECTRIC DOOR CONTACT
	CAMERA: CCTV FIXED, PAN-TILT-ZOOM, 360°
	DOOR RELEASE PANEL
	LATCH RETRACTION EXIT DEVICE (BY DOOR HARDWARE)
	ELECTRIC STRIKE (BY DOOR HARDWARE)
	REQUEST TO EXIT SWITCH IN EXIT DEVICE (BY DOOR HARDWARE)
	ELECTRONIC POWER TRANSFER (EPT) (BY DOOR HARDWARE)

SYMBOLS

TELECOMMUNICATIONS

	DATA OUTLET: WALL, CEILING, FLOOR
	DATA OUTLET: CABLE/JACK QUANTITY (x2 U.O.N.)
	DATA OUTLET: MOUNTING HEIGHT
	DATA OUTLET: WALL PHONE (x1 CABLE/JACK)
	SYSTEM WALL CLOCK: STANDARD, IP
	WIRELESS ACCESS POINT: WALL, CEILING
	ANALOG SPEAKER: WALL, CEILING
	IP SPEAKER: WALL, CEILING
	SPEAKER-HORN: WALL, CEILING
	PULL CORD
	DOME LIGHT: WALL, CEILING
	2-WAY COMM STATION
	2-WAY MASTER
	2-WAY COMM POWER SUPPLY
	REMOTE PAGING MICROPHONE PANEL
	WIRELESS DURESSE RECEIVER (RATH)

TELECOM PATHWAYS

	CONDUIT
	UNDERGROUND CONDUIT
	AERIAL
	SPLICE
	MAINTENANCE HOLE
	VAULT (SUBSCRIPT +)
	POLES
	RACK (2 POST)
	CABINET: SURFACE, RECESSED
	PULL BOX
	TELECOM UNDERGROUND VAULT
	CABLE PATHWAY FIRESTOPPING DEVICE
	CABLE TRAY: CENTER SUPPORT, OUTER SUPPORTS
	PRIMARY BONDING BUSBAR / SECONDARY BONDING BUSBAR
	TELEPHONE BACKBOARD.

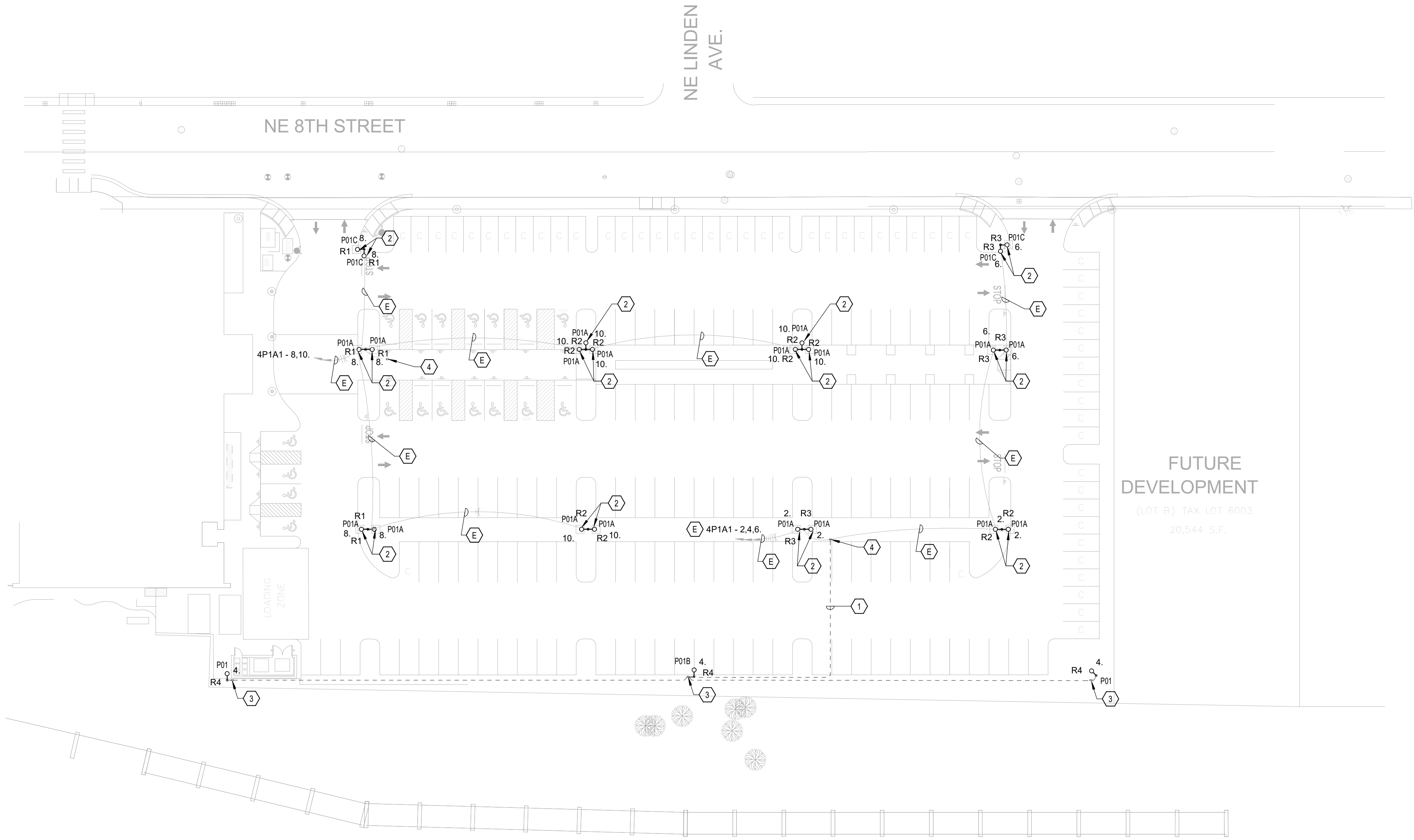
ONE-LINE SYMBOLS

	CONDUCTORS & CONDUIT
	CONDUCTORS & CONDUIT TO BE REMOVED
	CIRCUIT BREAKER, MOLDED CASE SWITCH
	BUS
	ATS
	METER
	PANEL
	MAIN GROUNDING BAR
	CONNECTION TO GROUND
	TRANSFORMER

GENERAL NOTES (APPLIES TO ALL DRAWINGS)

- A. WHERE EXACT DIMENSIONS ARE NOT CALLED FOR, DO NOT SCALE DRAWINGS TO DETERMINE LOCATION OF EQUIPMENT, JUNCTION BOXES, OUTLET BOXES, WIRE WAYS, PANELS, ETC. SEE ARCH FOR EXACT DIMENSIONS.
- B. ALL CONDUIT ROUTED UNDER A DRIVEABLE SURFACE SHALL BE SCHEDULE 80 PVC.

LUMINAIRE SCHEDULE											
TYPE MARK	LOCATION	DESCRIPTION	MANUFACTURER	MODEL	DIMMING	CCT/CRI	DELIVERED LUMENS	WATTAGE	VOLTAGE	FINISH	NOTES
P01	SITE	POLE MOUNTED SINGLE HEAD LED FIXTURE WITH FULL CUT-OFF OPTICS. PROVIDE WITH 25' TALL SQUARE POLE TO MATCH EXISTING POLES AND COORDINATE MOUNTING ACCESSORY TYPE WITH EXISTING. CLEAR GASKETED TEMPERED GLASS LENS. TYPE IV DISTRIBUTION. IP66 RATED FOR WET LOCATIONS. PROVIDE WITH NLIGHT AIR WIRELESS CONTROLS FOR DIMMING, MOTION AND DAYLIGHT CONTROLS SUITABLE FOR 25FT HEIGHT POLE.	LITHONIA	RSX2 LED-P4 SERIES	0-10V DIMMING TO 10%	3000K	23054 lm	187 W	277 V	STANDARD TO MATCH EXISTING	PROVIDE UNIVERSAL 120-277VOLTS
P01A	SITE	SAME AS P01 EXCEPT MOUNTED TO EXISTING POLE. COORDINATE MOUNTING ACCESSORY NEEDED WITH EXISTING POLE TYPE.	LITHONIA	RSX2 LED-P4 SERIES	0-10V DIMMING TO 10%	3000K	23054 lm	187 W	277 V	STANDARD TO MATCH EXISTING	PROVIDE UNIVERSAL 120-277VOLTS
P01B	SITE	SIMILAR TO P01 EXCEPT TYPE II DISTRIBUTION.	LITHONIA	RSX2 LED-P4 SERIES	0-10V DIMMING TO 10%	3000K	22836 lm	187 W	277 V	STANDARD TO MATCH EXISTING	PROVIDE UNIVERSAL 120-277VOLTS
P01C	SITE	SIMILAR TO P01A EXCEPT TYPE II DISTRIBUTION.	LITHONIA	RSX2 LED-P4 SERIES	0-10V DIMMING TO 10%	3000K	22836 lm	187 W	277 V	STANDARD TO MATCH EXISTING	PROVIDE UNIVERSAL 120-277VOLTS



1 LIGHTING SITE PLAN
1" = 30'-0"

GENERAL NOTES:

- CONNECT NEW LIGHTS TO EXISTING CIRCUIT. EXTEND AS REQUIRED.
- PROVIDE CLASS 2 WIRING TO EXTERIOR LIGHTS AS REQUIRED FOR THE nLIGHT SYSTEM.
- REFER TO DETAIL 2 ON E-400-1 FOR POLE BASE DETAIL.

KEY NOTES:

- SAW CUT OR BORE 1" SCHEDULE 40 PCV CONDUIT FROM EXISTING SITE LIGHTING POLE TO NEW HANDHOLE. PATCH AND REPAIR AS REQUIRED.
- MOUNT NEW LIGHTING HEAD TO EXISTING POLE. MAINTAIN POLE AND CIRCUITING FOR RECONNECTION TO NEW HEAD.
- REFER TO DETAIL 1 ON SHEET EL-400-1 FOR HANDHOLE.
- EXISTING HANDHOLE

Multnomah
County
Facilities & Property Management
401 N. Dixon Street
Portland, OR 97227-1865

REYES
ENGINEERING

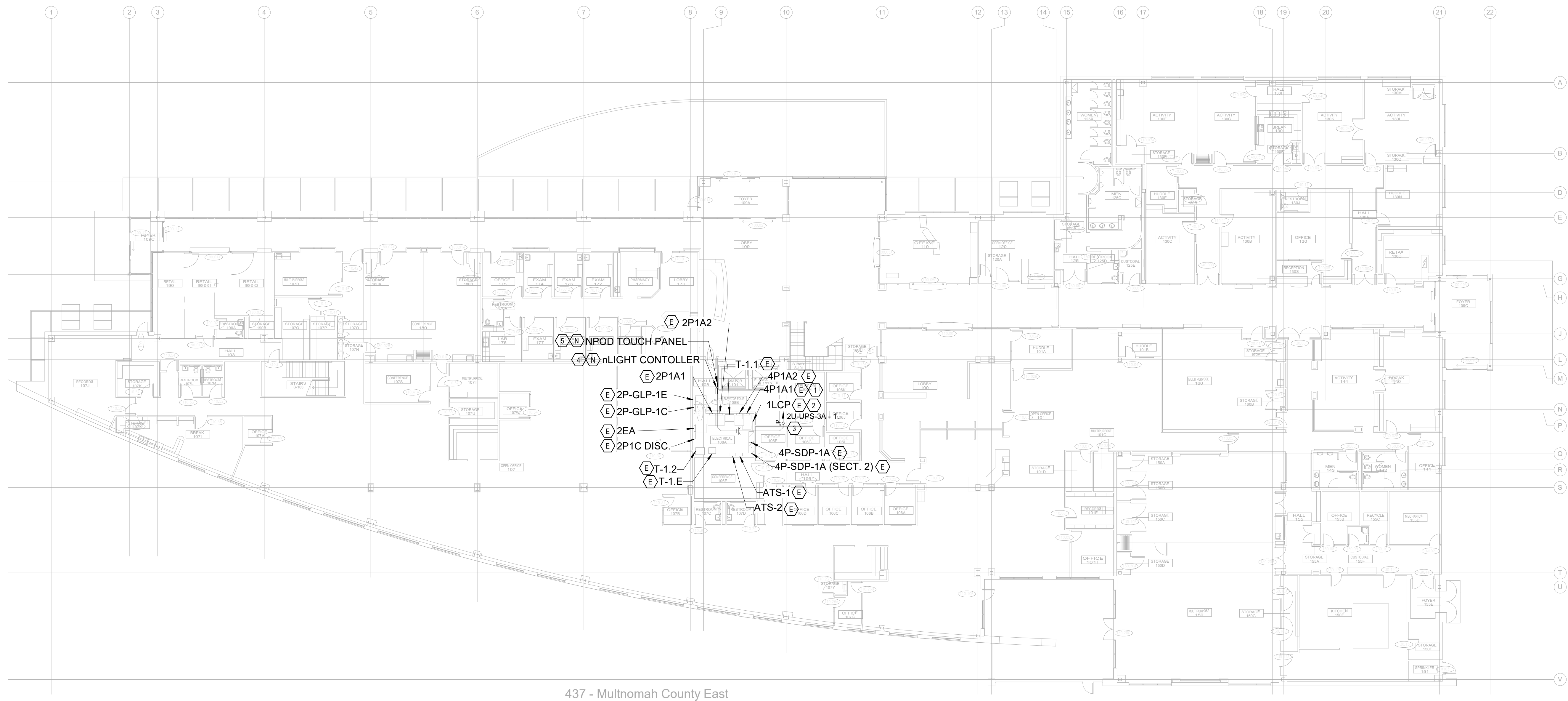
REGISTERED PROFESSIONAL
ENGINEER
18602PE
JULY 10, 1998
OREGON
PLATIANO V. REYES JR.
EXPIRES 12/31/2026

EAST PARKING LIGHTING
EAST COUNTY HEALTH CENTER
600 NE 8TH, GRESHAM, OR 97030

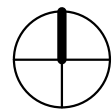
Mark	Date	Description of Revision	By
Drawn By: WSD Building Number: Checked By: HG Approved By: FVR Mulico Project Number:			
Sheet Title SITE LIGHTING PLAN			
Date 02/26/2025			
EL-101-1 Sheet Of			

KEY NOTES:

1. EXTEND CIRCUITS SERVING EXTERIOR SITE LIGHTING TO NEW nLIGHT CONTROLLER IN ELECTRICAL ROOM 301. CONNECT EXTERIOR CIRCUITS TO RELAY "R1" AS SHOWN ON SITE PLAN.
2. REMOVE EXTERIOR SITE LTG EAST CIRCUITS FROM LCP AND REROUTE TO NEW nLIGHT CONTROLLER.
3. ROUTE MINIMUM 1" CONDUIT FROM nLIGHT CONTROLLER LOCATION TO UPS PANEL IN 3RD FLOOR TELECOM ROOM. ROUTE THROUGH ELECTRICAL ROOM AND OFFICES TO TELECOM ROOM THEN UP TO THIRD FLOOR.
4. PROVIDE A nLIGHT ECLYPSE SYSTEM CONTROLLER COMPATITABLE WITH nLIGHT ENVISION SOFTWARE.
5. PROVIDE NPOD TOUCH CONTROLL PANEL FOR ON/OFF PROGRAMMING.



437 - Multnomah County East



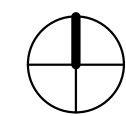
EAST PARKING LIGHTING
EAST COUNTY HEALTH CENTER
600 NE 8TH, GRESHAM, OR 97030

Mark	Date	Description of Revision	By

Drawn By: WSD
Building Number: Approved By: FVR
Mulico Project Number:

Sheet Title
LIGHTING FLOOR
PLAN

Date: 02/26/2025
EL-102-1
Sheet of



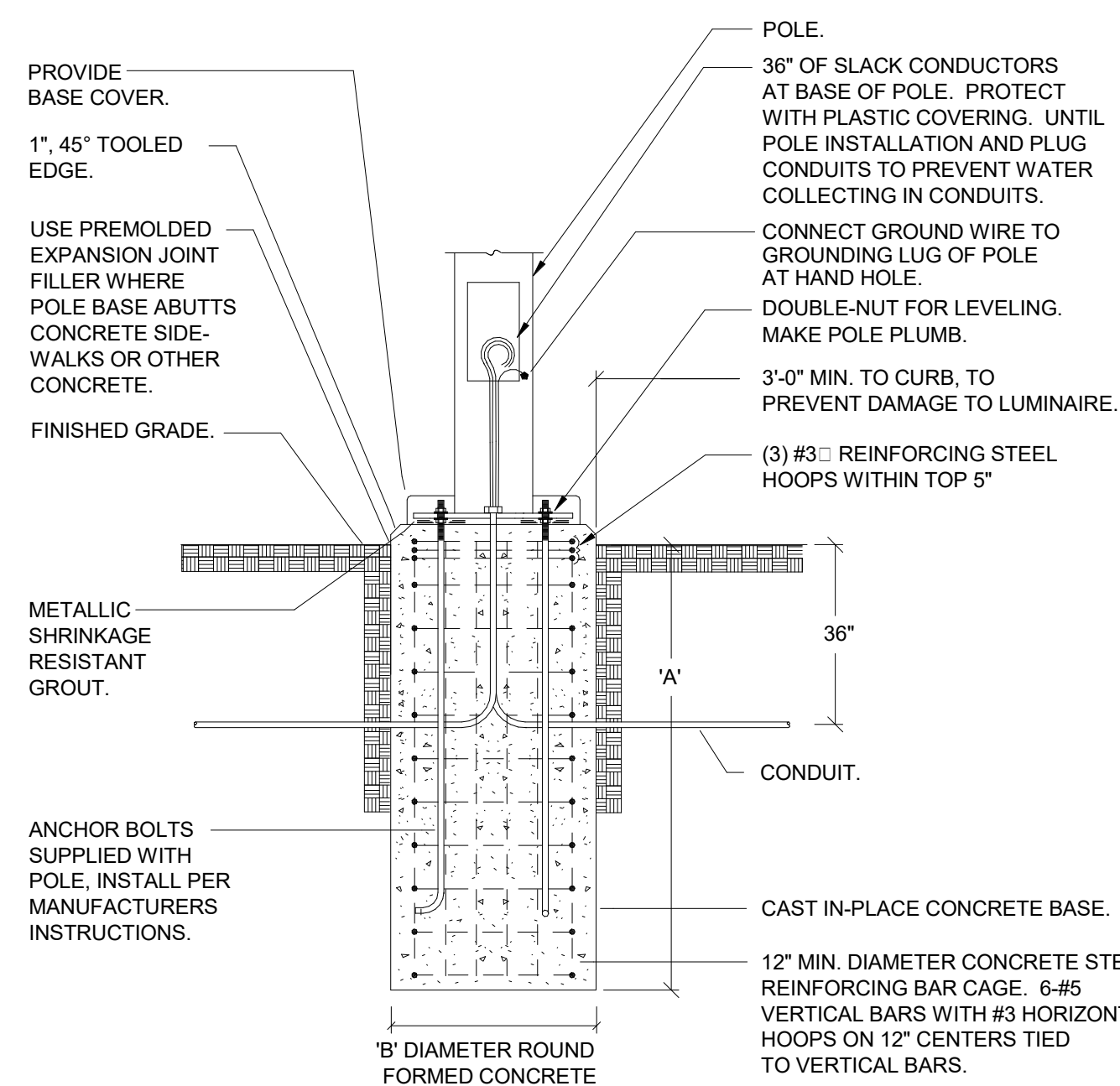
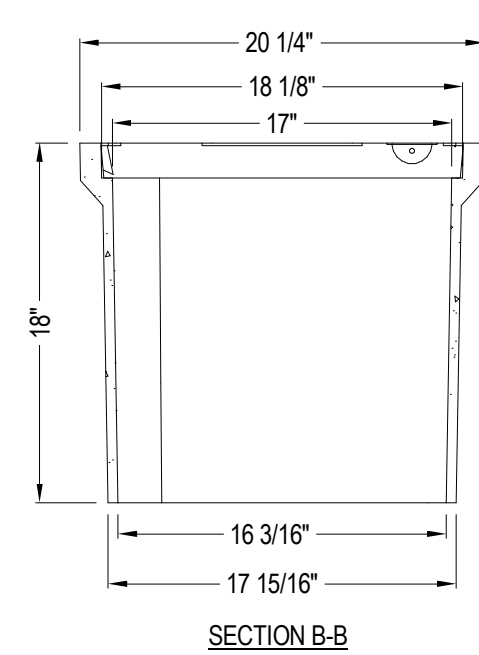
EAST PARKING LIGHTING
EAST COUNTY HEALTH CENTER
600 NE 8TH, GRESHAM, OR 97030

Mark	Date	Description of Revision	By

Drawn By: WSD
Building Number: HG
Mulico Project Number:
Checked By: HG
Approved By: FVR

Sheet Title
LIGHTING FLOOR
PLAN

Date
02/26/2025
EL-102-3
Sheet of



NOTE:
FIXTURE WIRE THROUGH
POLE TO LUMINAIRE TO
BE RATED FOR 150 F.

BASE DIMENSIONS	POLE HEIGHT			
	UP TO 15'	UP TO 22'	UP TO 35'	UP TO 40'
'A'	4'- 0"	4'- 0"	6'- 0"	7'- 0"
'B'	18"	24"	27"	30"

② POLE BASE DETAIL
NTS

REGISTERED PROFESSIONAL
ENGINEER
18602PE
Claviano V. Reyes Jr.
OREGON
JULY 10, 1998
CLAVIANO V. REYES JR.
EXPIRES 12/31/2026

EAST PARKING LIGHTING
EAST COUNTY HEALTH CENTER
600 NE 8TH, GRESHAM, OR 97030

[illegible]

Drawn By: WBD	Checked By: HG
Building Number:	Approved By: FVR

Multico Project Number:	
-------------------------	--

Sheet Title

LIGHTING DETAILS

Date 02/26/2025

EL-400-1
Sheet Of

Branch Panel: 4P1A1

Location:
Supply From: 4P-SDP-1A
Mounting: SURFACE
Enclosure: NEMA 1

Volts: 480/277 Wye
Phases: 3
Wires: 4

A.I.C. Rating: EXISTING
Available Fault Current: EXISTING
Mains Rating: 400 A
MCB Rating: 400A

CKT	Circuit Description	Trip	Poles	A	B	C	Poles	Trip	Circuit Description	CKT		
1	SPARE ON	20 A	1	0	748			1	20 A	EXTERIOR SITE LTG	2	
3	SPARE OFF	20 A	1		0	561		1	20 A	EXTERIOR SITE LTG	4	
5	EXTERIOR DOWN LIGHT	20 A	1				0	748	1	20 A	EXTERIOR SITE LTG	6
7	LTG AREA 1P OFFICE, HALL	20 A	1	0	1122			1	20 A	EXTERIOR SITE LTG	8	
9	LTG AREA 1P ACTIVITIES	20 A	1		0	1496		1	20 A	EXTERIOR SITE LTG	10	
11	LTG AREA 1P RESTROOMS	20 A	1				0	0	1	20 A	WALKWAY LTG	12
13	SPARE OFF	20 A	1	0	0			1	20 A	LTG AREA 1M OFFICE	14	
15	LTG AREA 1R CAFE.	20 A	1		0	0		1	20 A	LTG AREA 1C OPEN AREA	16	
17	LTG EXTERIOR SCONCE	20 A	1				0	0	1	20 A	RELAY 43 EXTERIOR LIGHTS CONTACTOR	18
19	SPARE OFF	20 A	1	0	0			1	20 A	LTG AREA 1T RESOURCES	20	
21	SPARE OFF	20 A	1		0	0		1	20 A	SPARE OFF	22	
23	LTG AREA 1R CAFE.	20 A	1				0	0	1	20 A	LTG AREA 1K WAITING	24
25	LTG AREA 1A RESTROOM	20 A	1	0	0			1	20 A	LTG AREA 1H EXAM ROOMS	26	
27	LIGHTS AREA 1O LOUNGE	20 A	1		0	0		1	20 A	LTG AREA 1J CONSULTING	28	
29	LTG AREA 1S KITCHEN	20 A	1				0	0	1	20 A	LTG AREA 1I OFFICE, STOR	30
31	LTG AREA 1B HALL	20 A	1	0	0			1	20 A	LTG AREA 1IOPEN AREA	32	
33	LTG AREA 1B HALL	20 A	1		0	0		1	20 A	LTG AREA 1C ELEVATOR LOBBY	34	
35	LTG AREA 1N COMMUNITY RM.	20 A	1				0	0	1	20 A	LTG AREA 1C HALL 100	36
37	PANEL 2P1C (2P-PNL-1B)	125 A	3	0	0			1	20 A	LTG AREA 1G CONF ROOM	38	
39	--	--	--		0	0		1	20 A	LTG AREA 1F	40	
41	--	--	--				0	0	1	20 A	LTG AREA 1F	42
Total Load:		1870 VA		2057 VA		748 VA						
Total...		7 A		8 A		3 A						

Load Classification	Connected Load	Demand Factor	Estimated Demand	Panel Totals
Lighting - Exterior	4675 VA	125.00%	5844 VA	
				Total Conn. Load: 4675 VA
				Total Est. Demand: 5844 VA
				Total Conn. Current: 6 A
				Total Est. Demand Current: 7 A

Notes:
LOAD IS ONLY NEW EQUIPMENT TO EXISITNG CIRCUITS. ALL CIRCUITS ARE EXISTING

Branch Panel: 2U-UPS-3A

Location:
Supply From:
Mounting: SURFACE
Enclosure: NEMA 1

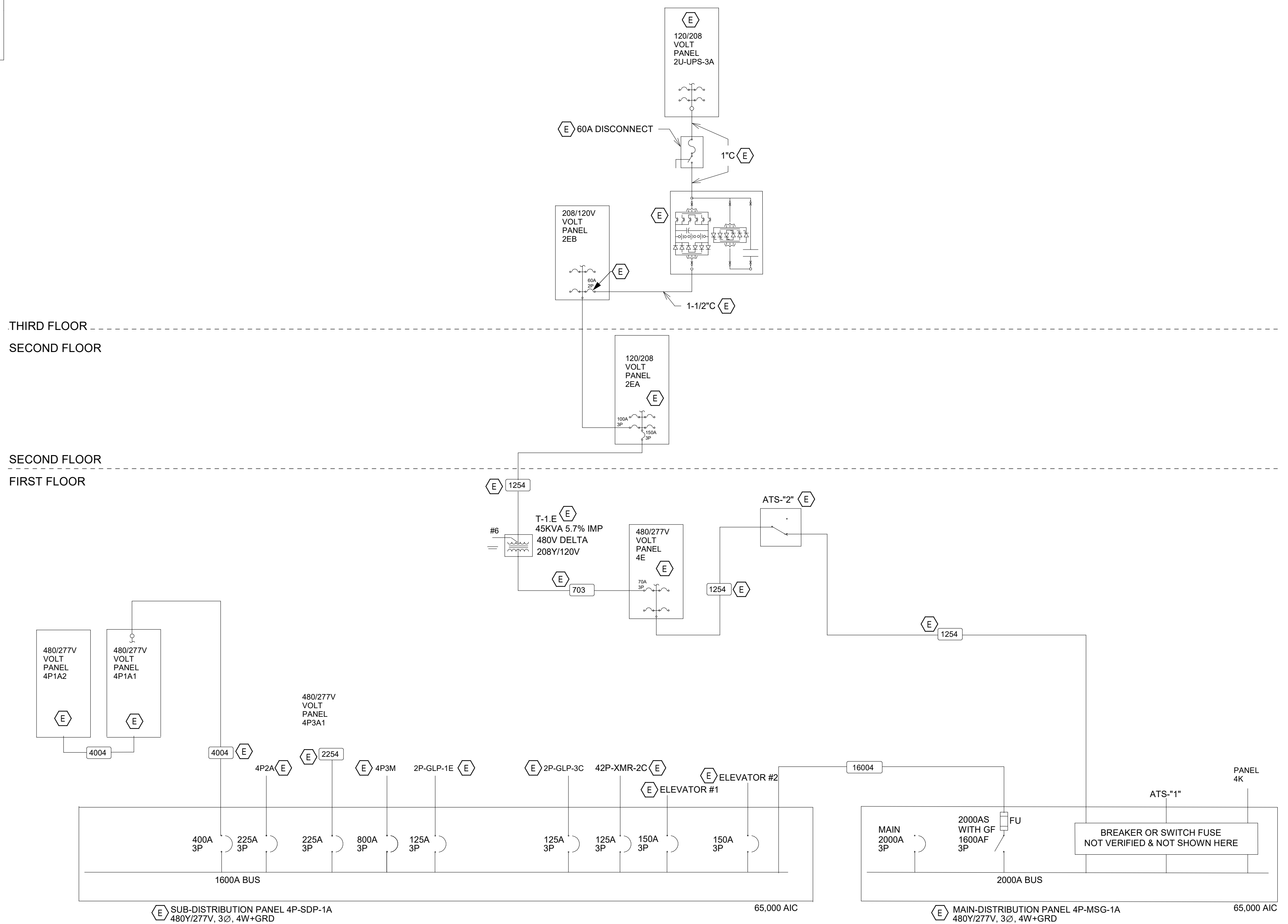
Volts: 120/240 Single
Phases: 1
Wires: 3

A.I.C. Rating: 10,000 AMPS SYMMETRICAL
Available Fault Current:
Mains Rating: 100 A
MCB Rating:

[illegible]

Load Classification	Connected Load	Demand Factor	Estimated Demand	Panel Totals
				Total Conn. Load: 0 VA
				Total Est. Demand: 0 VA
				Total Conn. Current: 0 A
				Total Est. Demand Current: 0 A

Notes:

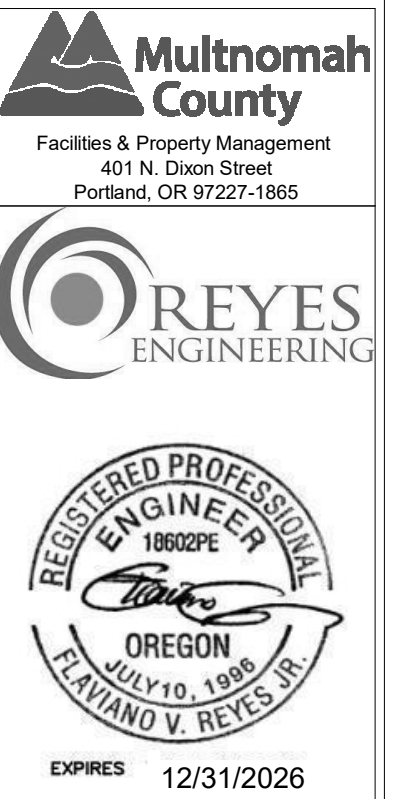


① ONE-LINE DIAGRAM
N.T.S.

GENERAL NOTES:

- A. DEMOLITION WORK IS ACCOMMODATED WITH AN 'X' HEX, NUMBERED KEYNOTE, AND DASHED LINEWORK. EXISTING EQUIPMENT IS SHOWN AS HALFTONE. NEW WORK IS ACCOMMODATED WITH AN 'N' HEX.
- B. UPON AWARD OF CONTRACT, PROVIDE 30-DAY ELECTRICAL PEAK LOAD DEMAND METERING ON PANELBOARD FEEDERS WHERE NEW CIRCUITS ARE BEING ADDED. REPORT PEAK AMPERES OR VOLT-AMPERES (VA) IMMEDIATELY TO THE ENGINEER AFTER TESTING COMPLETED.

KEYNOTES:



EAST PARKING LIGHTING
EAST COUNTY HEALTH CENTER
600 NE 8TH, GRESHAM, OR 97030

[illegible]

Drawn By: WBD	Checked By: HG
Building Number:	Approved By: FVR
Multico Project Number:	

Sheet Title

ONE-LINE DIAGRAM

Date
02/26/2025
EL-600-1
Sheet Of